



# PRODUCT CATALOGUE

Sealed Lead Acid Maintenance Free Batteries

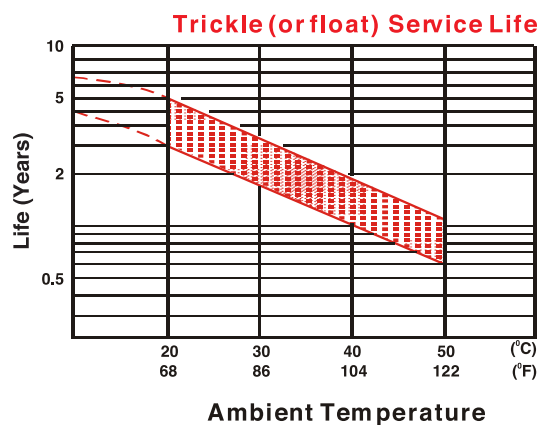
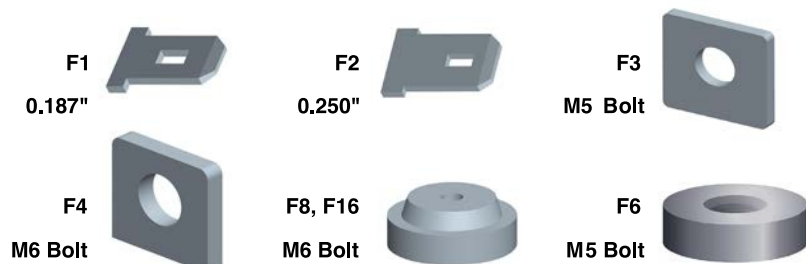
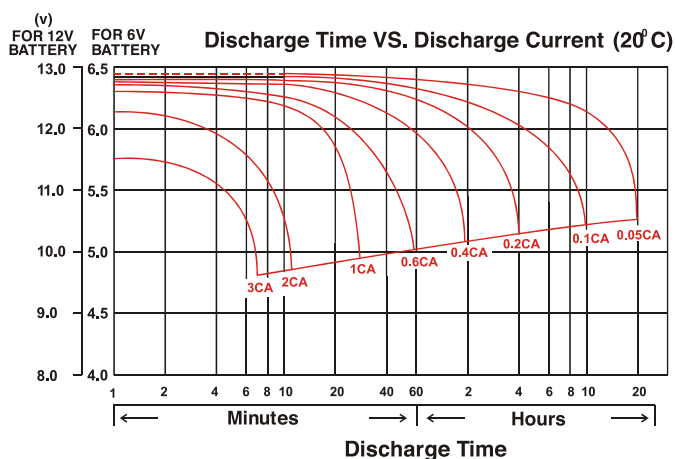
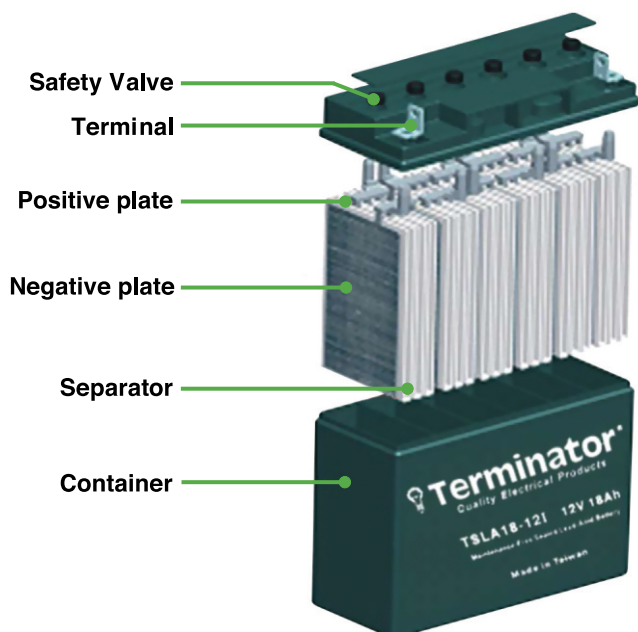



Terminator brand was launched in year 2000 and has become a well-known brand in Middle East. The 2500+ products under this brand are sold in 35 countries & provides best Quality to Price ratio than any other brand in the region.



Power Safe brand was launched in 2010 with sole purpose of providing yet another economical range of electrical products to masses in Middle East, African and CIS countries keeping safety in mind. The brand is well received and product range is increasing day by day.

Produced by ISO Certified Manufacturer



Picture	Terminal Type	Volts	Ah/ C20	Unit Dimension (mm)	Unit Weight (Kg)	Carton Qty (Pcs)	Carton Dimension (cm)	Carton Weight (Kg)
 <p>Model No: TSLA1.2-6</p>	F1	6V	1.2Ah	97x25x52mm	0.30Kg	30Pcs	40x22.4x9.7cm	10.00Kg
 <p>Model No: TSLA4-6B</p>	F1	6V	4Ah	70x47x101mm	0.70Kg	20Pcs	37x22.5x15cm	14.50Kg

Picture	Terminal Type	Volts	Ah/ C20	Unit Dimension (mm)	Unit Weight (Kg)	Carton Qty (Pcs)	Carton Dimension (cm)	Carton Weight (Kg)
 <p><b>Model No: TSLA4.5-6</b></p>	F1	6V	4.5Ah	70x47x101mm	0.91Kg	20Pcs	37x22.5x15cm	18.70Kg
 <p><b>Model No: TSLA7-6</b></p>	F1	6V	7Ah	151x34x94mm	1.20Kg	10Pcs	31.2x21.2x13.3cm	12.90Kg
 <p><b>Model No: TSLA12-6S</b></p>	F1	6V	12Ah	151x50x94mm	1.90Kg	10Pcs	31.2x29.4x13cm	19.20Kg
 <p><b>Model No: TSLA1.2-12T</b></p>	F1	12V	1.2Ah	97x49x50mm	0.59g	20Pcs	40x26.4x9.1cm	11.30Kg
 <p><b>Model No: TSLA2.3-12</b></p>	F1	12V	2.3Ah	178x34x60mm	1.05Kg	10Pcs	38x23x11cm	10.80Kg



Picture	Terminal Type	Volts	Ah/ C20	Unit Dimension (mm)	Unit Weight (Kg)	Carton Qty (Pcs)	Carton Dimension (cm)	Carton Weight (Kg)
 <p><b>Model No: TSLA3-12</b></p>	F1	12V	3Ah	134x67x59.5mm	1.30Kg	10Pcs	39x29x11cm	13.30Kg
 <p><b>Model No: TSLA4.5-12</b></p>	F1	12V	4.5Ah	90x70x101mm	1.62Kg	10Pcs	39.1x18.8x13.9cm	16.60Kg
 <p><b>Model No: TSLA5-12B</b></p>	F1	12V	5Ah	90x70x101mm	1.65Kg	10Pcs	39.1x18.8x13.9cm	16.60Kg
 <p><b>Model No: TSLA7-12B</b></p>	F1	12V	7Ah	151x65x94mm	2.20Kg	8Pcs	32.4X28.5X13.6cm	18.20Kg
 <p><b>Model No: TSLA7.2-12</b></p>	F2	12V	7.2Ah	151x65x94mm	2.40Kg	8Pcs	32.4x28.5x13.6cm	20.30Kg

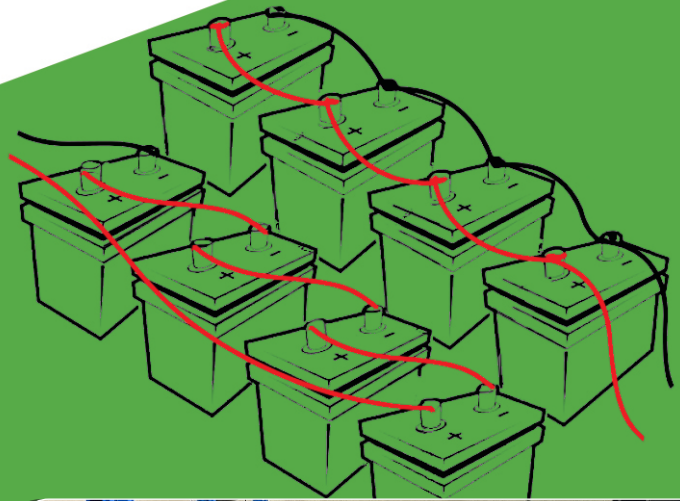
Picture	Terminal Type	Volts	Ah/ C20	Unit Dimension (mm)	Unit Weight (Kg)	Carton Qty (Pcs)	Carton Dimension (cm)	Carton Weight (Kg)
 <p><b>Model No: TSLA9-12</b></p>	F1	12V	9Ah	151x65x94mm	2.70Kg	5Pcs	37x16,1x12.7cm	13.90Kg
 <p><b>Model No: TSLA10-12SE</b></p>	F1	12V	10Ah	151x65x112mm	3.30Kg	5Pcs	38x17x16.5cm	16.80Kg
 <p><b>Model No: TSLA12-12</b></p>	F2	12V	12Ah	151x98x93mm	3.74Kg	4Pcs	32.5x22.5x14cm	15.30Kg
 <p><b>Model No: TSLA18-12</b></p>	F3	12V	18Ah	181x76x167mm	5.60Kg	2Pcs	19.4x17x18.9cm	11.50Kg
 <p><b>Model No: TSLA26-12B</b></p>	F3	12V	26Ah	166x175x125mm	8.00Kg	2Pcs	36.5x19.5x17cm	16.80Kg

Picture	Terminal Type	Volts	Ah/ C20	Unit Dimension (mm)	Unit Weight (Kg)	Carton Qty (Pcs)	Carton Dimension (cm)	Carton Weight (Kg)
 <p><b>Model No: TSLA33-12</b></p>	F6	12V	33Ah	197x131x159mm	9.90Kg	1Pc	27.5x20.8x22cm	20.30Kg
 <p><b>Model No: TSLA40-12</b></p>	F4	12V	40Ah	198x166x171mm	13.10Kg	1Pc	20.6x17.6x18.5cm	13.80Kg
 <p><b>Model No: TSLA45-12</b></p>	F4	12V	45Ah	198x166x171mm	14.50Kg	1Pc	20.5x17.3x20cm	14.80Kg
 <p><b>Model No: TSLA55-12N</b></p>	F8	12V	55Ah	226x135x207mm	17.00Kg	1Pc	24x15x26cm	18.10Kg
 <p><b>Model No: TSLA65-12AN</b></p>	F8	12V	65Ah	350x167x179mm	21.00Kg	1Pc	36x18x21.5cm	22.00Kg

Picture	Terminal Type	Volts	Ah/ C20	Unit Dimension (mm)	Unit Weight (Kg)	Carton Qty (Pcs)	Carton Dimension (cm)	Carton Weight (Kg)
 <b>Model No: TSLA75-12N</b>	F8	12V	75Ah	260x170x 202mm	24.20Kg	1Pc	27.3x18.2x22.7cm	25.60Kg
 <b>Model No: TSLA100-12N</b>	F16	12V	100Ah	338x170x 212mm	32.50Kg	1Pc	34.8x18.2x23.6cm	33.40Kg
 <b>Model No: TSLA150-12N</b>	F16	12V	150Ah	352x170x 276mm	46.00Kg	1Pc	49x18x 27.8cm	46.00Kg
 <b>Model No: TSLA200-12N</b>	F18	12V	200Ah	522x224x 238mm	61.50Kg	1Pc	52.3x25x 28.5cm	62.01Kg

Model No.	V	Ah/C20	Unit Dimension (mm)	Application
TSLA1.2-6	6	1.2	97x25x52	Fire alarm system, automatic controller
TSLA4-6B	6	4	70x47x101	Emergency light, portable light, toy car, electronic scale
TSLA4.5-6	6	4.5	70x47x101	Emergency light, portable light, toy car, electronic scale
TSLA7-6	6	7	151x34x94	Emergency light, portable light, toy car, electronic scale
TSLA12-6S	6	12	151x50x94	Security system
TSLA1.2-12T	12	1.2	97x49x50	Fire alarm panel, security system
TSLA2.3-12	12	2.3	178x34x60	Fire alarm panel, security system, medical equipment
TSLA3-12	12	3	134x67x59.5	Gas pump, bath lifter ( medical use)
TSLA4.5-12	12	4.5	90x70x101	AC/DC fans, security system
TSLA5-12B	12	5	90x70x101	AC/DC fans, security system
TSLA7-12B	12	7	151x65x94	UPS, security system
TSLA7.2-12	12	7.2	151x65x94	UPS, security system
TSLA9-12	12	9	151x65x94	UPS
TSLA10-12SE	12	10	151x65x112	Electric bike, electric power, UPS
TSLA12-12	12	12	151x98x93	UPS, security system
TSLA18-12I	12	18	181x76x167	UPS, security system, electric power
TSLA26-12B	12	26	166x175x125	Security system
TSLA33-12	12	33	197x131x159	Power wheelchair
TSLA40-12	12	40	198x166x171	UPS
TSLA45-12	12	45	198x166x171	UPS, power wheelchair
TSLA55-12N	12	55	226x135x207	UPS
TSLA65-12B	12	65	350x166x174	UPS, security system
TSLA75-12N	12	75	260x170x202	Telecom, UPS
TSLA100-12N	12	100	338x170x212	Telecom, UPS
TSLA150-12N	12	150	352x170x276	Telecom, UPS
TSLA200-12N	12	200	522x224x238	Telecom, UPS



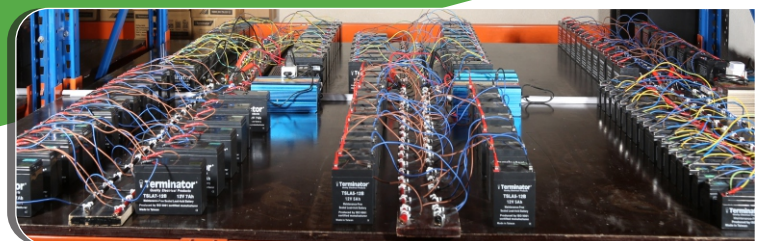
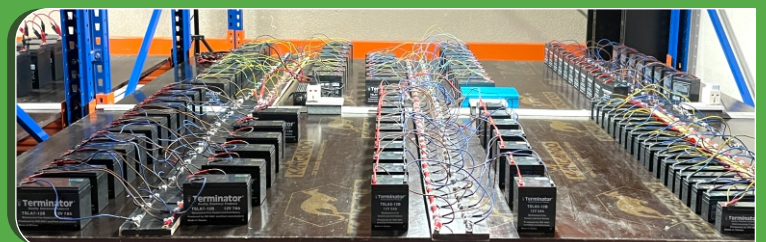


# BATTERY CHARGING DOCK

To ensure that our batteries are always "Inspected & Fully Charged" and to enhance customer satisfaction, we have implemented a rigorous process of inspecting and charging all our batteries. This proactive measure helps us avoid common issues such as,

- Drained batteries.
- Underperformance, or malfunctioning units.

We take pride and satisfaction in extending this service to all our valued battery clients.



## Note



# OUR PRODUCTS RANGE



**Testers &  
Test Instruments**



**Power Extension & Extension Reels**



**Multi Adaptors,  
Travel Adaptors & Plugs**



**SLA Batteries**



**Cables**  
(Audio-Video, HDMI, USB, VGA & LAN Cables,  
Power Cord, Telephone & IT Accessories).



**Wall Mounts**



**Power Inverters, Converters, Stabilizers,  
AC-DC Adaptors, Voltage Guards**



**DIY Tools & Soldering Equipments**



**Digital Wireless Doorbells &  
Night Lights**



**LED Lights**



**Lamp Holders, Bed Switches,  
Wall Sockets & Junction Boxes**



**Cable Ties/Clips & Tapes**



FOLLOW US ON SOCIAL MEDIA



[www.terminator.ae](http://www.terminator.ae) | [www.meet-instruments.ae](http://www.meet-instruments.ae)